

NAME: _____

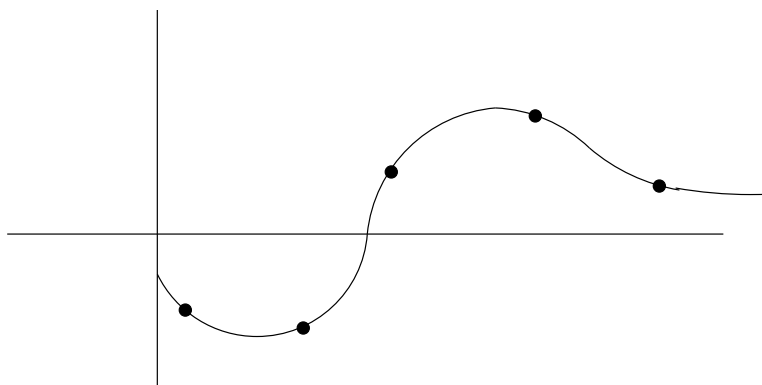
(1) Find $f'(x)$ for each of the following:

(a) $f(x) = \frac{1}{x^{7/2}} + 5x^2 - \frac{1}{3}\sqrt{x} + 2\pi$

(b) $f(x) = \frac{x-1}{\sqrt{x}}$

(c) $f(x) = x^{3/2}(2 + \sqrt{x})$

(2) The figure below gives the position, $f(t)$, of a particle at time t . Locate each of the points described.



- (a) Put an A next to the point(s) where the position is positive.
(b) Put a B next to the point(s) where the velocity is positive.
(c) Put a C next to the point(s) where the acceleration is positive.